

# Northern Lights

Vol. 45, No. 1  
Spring 2014 —  
**Special  
Edition**



**Lutheran Indian Ministries**  
*Christ's Kingdom—Every Native American Nation.*

A Ministry of Lutheran Association of Missionaries and Pilots U.S.



**Rev. Dr. Don Johnson (Makah)**

## LETTER FROM DON

### A Dream Coming True

After prayerful consideration by my staff and Board, we have determined to launch a major campaign to raise the funds necessary to build a new Haskell LIGHT Campus Ministry facility.

We have taken several years planning for a new ministry center for our staff serving students at Haskell Indian Nations University in Lawrence, Kan. For years, Will and Patricia Main have provided counsel, Bible studies and worship opportunities in a building long since outdated and too small to accommodate the growing number of students who come there on a regular basis.

The new ministry facility will be two stories high, have a capacity to afford regular worship, places for students to study and with room to accommodate student expressions of art and tradition. There is nothing more significant or important we can do as a ministry than to afford Native youth with an opportunity to learn about the grace of God in Jesus in a setting that will permit worship, fellowship, counsel and opportunities to study and grow in their understanding of God's Word. It will also enable us to more effectively achieve our ministry purpose of growing Native leaders to be witnesses in their own communities once their college years are completed.

Many of the young men and women who attend Haskell Indian Nations University come from isolated and very often small reservation communities in the Southwest and the Western part of the United States.

Quite frequently they grew up amidst poverty and in situations where alcohol and drugs have ravaged family systems. The stories of abuse they share are sad and tragic.

Quite simply, the reservation system the U.S. government established in the 19th century to civilize Indians was based on an ancient, flawed philosophy first articulated by the ancient Greek philosopher, Aristotle.

Aristotle believed that conquered people ought to have everything they valued taken away from them and, in exchange, be given civilization. He believed that such people would never be as competent as their conquerors and would always need to be dependent. This ancient Greek idea was at the heart of seizure of traditional Indian lands, the forming of reservations where they could be confined and educated in civilization; and it is why Native Americans became so dependent on government.

Our ministry vision, inspired by Jesus' own model of selecting disciples and fitting them for ministry before sending them out to change their world, is directly oppositional to failed philosophies that hinder peoples' creativity and furthers dependency. We seek instead to recruit, equip and prepare Native people to serve their own—and to do this in a way that maximizes who they are as God's people.

The new facility we are seeking funds to build will enable us to more effectively accommodate this purpose. Groundbreaking is planned for early May.

Please pray that our campaign to raise funds for this project will be successful. And if you feel you can make a pledge to help us achieve this dream come true, please do so.

Thank you for your generous support of this ministry. God bless! »»»

## TABLE OF CONTENTS

### PAGE 2

**Staff Highlight**  
A Journey Leading to Haskell LIGHT Campus Ministry

### PAGE 3

**Ministry Highlight**  
Life Skills Class  
by Patricia Main

**Campus Quotes**  
Venida S. Chenault, Ph.D., President – Haskell Indian Nations University

Students and Graduate

### PAGE 4-5

**Feature Story**  
A New Facility for Haskell LIGHT Campus Ministry

Building on the Foundation for Many Generations!

The new facility will ...

Students can expect our campus ministry leadership to serve as ...

### PAGE 6

**Native American History**  
Native American History: Its Impact Today

Haskell Indian Nations University: Its History

### PAGE 7

**Ministry Support**  
Memorials & Honorariums

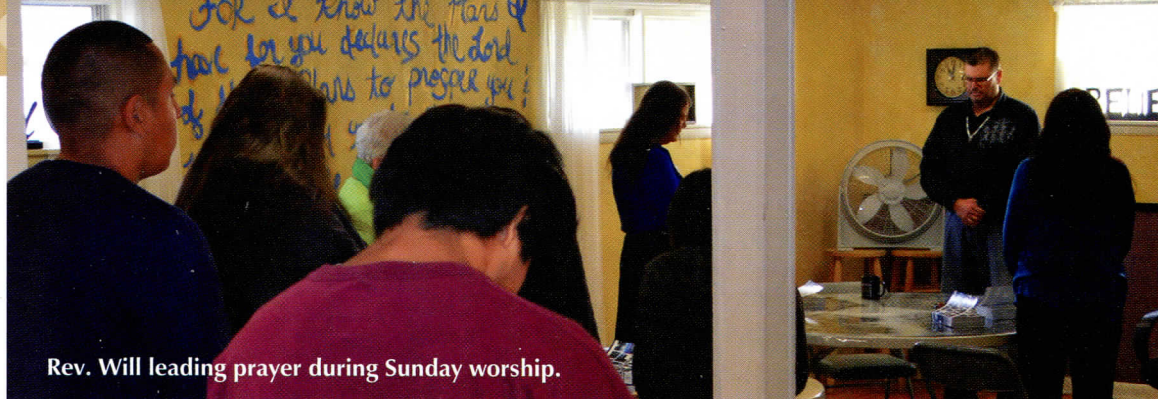
Laborers For Christ

A Gift Today ...  
A Legacy Tomorrow



Patricia and I are so very blessed to be here! We relish every opportunity to share the Good News of the Gospel and thank God every day for drawing our hearts to this historic place.”

REV. WILL MAIN (SIOUX)



Rev. Will leading prayer during Sunday worship.

## A Journey Leading to Haskell LIGHT Campus Ministry *By Karen Higgins (Alaska Native)*

Entering Christian ministry can be a tug-of-war between the familiar and the unknown, between the practical and the spiritual. Will Main shares this very experience.

“I remember when Don Johnson invited Patricia and me to work in campus ministry to Native American students.

“Are you crazy?!” I thought. Literally, I told him never to call my house again with notions like that.

“Looking back, it’s evident Don was planting a seed since we are now at Haskell Indian Nations University doing campus ministry; but it didn’t happen without first needing to learn we can trust God for the outcome.”

What was familiar to Will was Canada—specifically, “rez” life on the Standing Buffalo Dakota Reservation—and working as a mechanic in his own garage. The idea of doing anything different had not crossed his mind, let alone becoming a director of campus ministry as a Lutheran pastor and preaching and teaching God’s Word to Native Americans.

Since 2007, Will and Patricia have served as co-directors of Haskell LIGHT Campus Ministry. In 2011, Will completed his pastoral training through the Ethnic Immigrant Institute of Theology (EIIT) Program at Concordia Seminary in St. Louis. Lutheran Indian Ministries has since called him to serve as pastor to the students.

Will reflects on his journey leading up to today: “Jesus weaves the tapestry of our lives, adding and removing threads as only He can do. The life experiences we each have

become the very things He uses to have us minister to others.

“Take campus ministry, for example,” Will quips. “Who would have guessed that skills in internal combustion engines would provide me with opportunities to speak to the Haskell students about our wonderful Jesus. Lately, I have been busy not only with Bible studies and Sunday services, but I’m also working on students’ cars, changing serpentine belts, oil and filters, checking batteries and charging systems, rotating tires and more—all in the name of Jesus. I used to do these things in Canada to provide for my family, but now I get to do these things as a ministry.”

The Mains have incorporated basic automotive maintenance into their new Life Skills class to better equip students with the basics of owning a car. And as any pastor might admit, he adds, “I use this time as an example of how Jesus did ministry by meeting people where they are and interacting with them to reveal a greater spiritual truth.”

When he was asked what it means for their ministry to have a larger facility, Will said, “We have made the most of what God has graciously provided all these years. Now, more students come to us and stay longer, hoping to grow in their faith and seek God’s will for their lives. All of that is wonderful, but it’s increasingly difficult to juggle ministry activities in such a small space and in an old building in need of repairs. It will be an answered prayer to do ministry in ample space. And what a witness for students to realize how much others care to provide a place dedicated to their spiritual needs!” ➤





Patricia Main (Cree)

## Life Skills Class *By Patricia Main (Cree)*

This semester at Haskell LIGHT Campus Ministry, we have introduced a new Life Skill class to students. We meet every

Wednesday for several hours with the idea of

building on basic life skills such as cooking, budgeting and small mechanics—things that help students manage their day-to-day needs. We also discuss family dynamics, which includes a look at how theirs were structured, and we talk about the need for healthy relationships and learning to serve one another.

For our Life Skills class, we provide a safe, trusting environment and keep the group relatively small so students can share their experiences. We laugh, we cry and we pray with them. Whatever our topic is, we discuss it in light of what God’s Word says to us.

Our ultimate hope is to build the students up in Christ through prayer and His Word so they can experience new life and healing for their soul.

As Christians, we are always growing and learning about who we are in Christ Jesus and how this reflects in our life’s journey. We want our students to understand this early in



their faith walk regardless of their past or ambitions for the future.

Like most of us, our students have stories that are both good and bad, but theirs is usually unique to Native reservation life or remote village life. When they arrive at Haskell Indian Nations University, they realize there are missing gaps in knowing how to deal with life issues. Those are the things we address as we share Jesus and how He makes us whole and gives us a new sense of direction and purpose.

Having a new ministry facility will be amazing for our students. They are our next generation of believers who will take what they’ve learned back to their people. Already they appreciate the direction and the interaction they experience at the LIGHT House. Imagine how a new building will lend itself toward their healing and future! Will and I could not be more excited for them. ➤➤



**“In this way they will lay up treasure for themselves as a firm foundation for the coming age, so that they may take hold of the life that is truly life.”**

1 TIMOTHY 6:19

## CAMPUS QUOTES

**“I wish to express our appreciation to the LIGHT House Ministry for your faithful support of Haskell, specifically our students. The spiritual well being of our students is a key component in their retention and success while they attend the University.”**

*Venida S. Chenault, Ph.D.,  
President – Haskell Indian Nations University*

**“It’s time for us to find healing in forgiveness.”**

*Maria Caddo (Apache),  
Miss Haskell! 2014 –  
Haskell Indian Nations University*

**“God’s love makes me feel blessed and grateful. I’m grateful for His grace and mercy. I’m grateful for His forgiveness and everlasting love that frees me from my past.”**

*Tsanavi Spoonhunter  
(Apache/Paiute), student  
at Haskell Indian Nations University*

**“I’m thankful you’ve been called to mentor me so that I can learn from you and the church.”**

*Mat Oakie (Dakota Sioux),  
graduate of Haskell Indian Nations University*

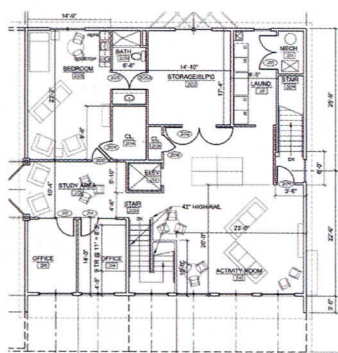


Floor Plans for Phase I (right), which is the lower right level of the building, and Phase II (left), which is the lower left and second levels of the building. To see a larger view of the floor plans, visit our website at [LutheranIndianMinistries.org](http://LutheranIndianMinistries.org).

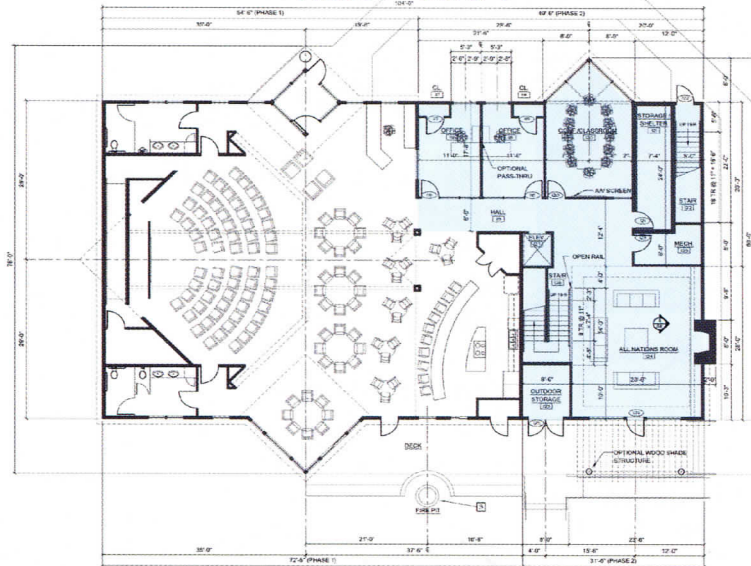
**The new facility will:**

- » provide for a worshiping community where Native American leadership expresses Christ-centered worship in a culturally redemptive way;
- » create a Native leadership institute, working in partnership with Lutheran universities and seminaries to provide distance-learning accredited theological classes;
- » allow for a large commercial kitchen to host outreach activities for students and the community;
- » have a fellowship area designed to encourage Native cultural expression and appreciation; and
- » have office space to provide confidential counseling.

Phase II – Level 2



Phase I – Level 1



## A New Facility for Haskell LIGHT Campus Ministry

Haskell LIGHT Campus Ministry is strategically situated in this time and place adjacent to the most well-known Native American school in North America. This ministry, more than any other, is uniquely prepared to reach out to the students of Haskell Indian Nations University and afford them the opportunity to grow in their faith and to serve as valued members of the Kingdom of God.

The nationwide confluence of more than 1,000 Native students from over 145 tribes on one campus each year allows for opportunities to have great impact. We eagerly anticipate an expanded facility that will be a place where Native students will feel welcomed, safe and be nourished both physically and spiritually.

Additionally, the history of our Native people forms the basis for recruiting and preparing Native leaders, one that recognizes their talents and seeks to prepare them to take on responsibility while affording them opportunities to make a difference in their communities. Haskell LIGHT Campus Ministry will be such a place.

The new campus ministry center will be a two-level, 8,600-square-foot facility. Lutheran Indian Ministries has partnered with Laborers For Christ for its building

construction. Work will be done in two phases to allow ministry to continue on the current Haskell LIGHT property during construction. For more information about Laborers For Christ, see Page 7.

Groundbreaking for Phase I construction will begin May 3, 2014, with completion in late fall 2014. Phase II construction will begin in spring 2015 with completion in late fall 2015.

The \$1.7 million campaign goal includes \$1.4 million for construction with additional funds for ministry training scholarships, furnishings and mortgage retirement. »»

**Groundbreaking is scheduled for May 3**





# Building on the Foundation for Many Generations!

## BUILD WITH US!

The Rupert Dunklau Foundation blessed Lutheran Indian Ministries with a \$100,000 matching grant for this project!

For every \$100,000 we raise, the foundation will give us \$10,000! The sooner we raise \$1 million for this project, the sooner we receive the full \$100,000.

## YOUR GIFT IS CRITICAL ...

- » to reach the full potential of building up Native Christian leaders through ministry training programs. When students leave Haskell, they will be equipped to be Christian leaders, leading lights, in their communities!
- » to afford the increasing number of students desiring to be part of changing their world and positively impacting their own people.
- » to expand opportunities for worship, learning, fellowship and witnessing!

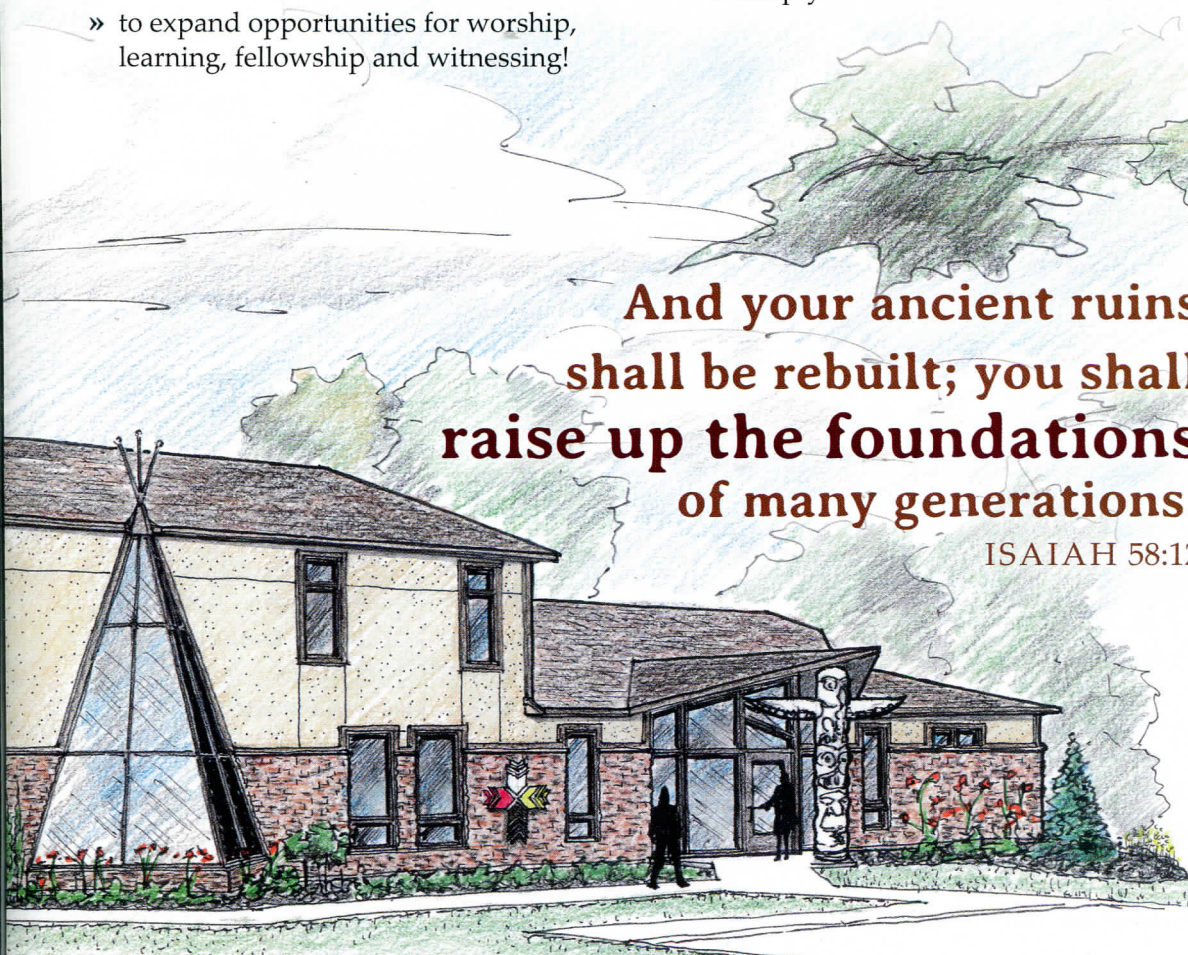
## VOLUNTEER LABOR IS NEEDED!

We are asking students at Haskell to help with labor at the time of construction. We welcome your help as well!

If you and your congregation or group would like to volunteer your labor, please contact Lutheran Indian Ministries at 888-783-5267 for specific details.

## PLEASE PRAY ...

- » for Rev. Will and Patricia Main as they continue to lead this vibrant campus ministry.
- » for the Haskell students that they would have a closer walk with God and use their gifts for His glory as they serve Him in their communities.
- » that God would bless the efforts of this campaign so ministry can flourish and multiply.



**And your ancient ruins shall be rebuilt; you shall raise up the foundations of many generations.**

ISAIAH 58:12

**Students can expect our campus ministry leadership to serve as:**

### MENTORS »

Campus faculty and coaches look to Will and Patricia Main as mentors for the students.

### ROLE MODELS »

Students see them as examples for living.

### COUNSELORS »

The Mains meet students where they are, both spiritually and emotionally.

### LEADERS »

The Mains lead, guide and encourage students to be their best.

### MINISTERS »

Will and Patricia speak candidly about hardships that have impacted Native communities for generations. They share God's healing Word with joy and love in their hearts for every student they meet.



## Native American History: Its Impact Today

Imagine what it would have been like to have everything you had ever known or lived by—your traditions, culture, language, family life, land and natural resources—suddenly taken from you in return for nothing more than empty promises and useless goods. A look back over several hundred years reveals these kind of experiences for Native Americans, Alaska Natives and Native Hawaiians as the United States government seized territories across this land.

These and other past experiences have made a debilitating impact for every generation of North American Native tribes, nations and villages since. When you consider the fact that still today there is little or no commerce or industry in these remote communities, what else can the result be except consistently severe poverty. Imagine, then, the weight and scope of daily burdens for our Native brothers and sisters.

1. [www.ihs.gov/newsroom/factsheets/disparities](http://www.ihs.gov/newsroom/factsheets/disparities)

2. [www.ihs.gov/behavioral/documents/AIANBHBriefingBook.pdf](http://www.ihs.gov/behavioral/documents/AIANBHBriefingBook.pdf)

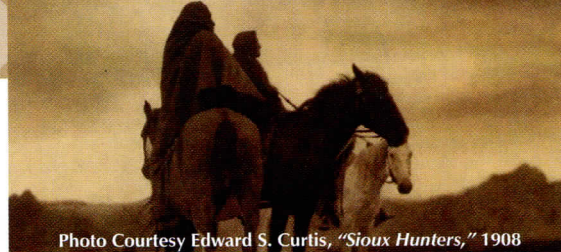


Photo Courtesy Edward S. Curtis, "Sioux Hunters," 1908

For instance, a recent health report shows that "American Indians and Alaska Natives die at higher rates than other Americans from:

- alcoholism (552 percent higher)
- diabetes (182 percent higher)
- unintentional injuries (138 percent higher)
- homicide (83 percent higher)
- suicide (74 percent higher)."<sup>1</sup>

Consider the impact it has on loved ones that 40 percent of those suicides are children and young adults aged 15 to 24 years.<sup>2</sup>

Thankfully, because of God's grace and His power working in their lives to transform evil into good, many Natives have come out with a story of survival and a message of endurance that are blessings for the Christian Church and reasons for praising God. Lutheran Indian Ministries is blessed with many such leaders on staff who are now preparing the next generation of indigenous peoples for service in the church. »»

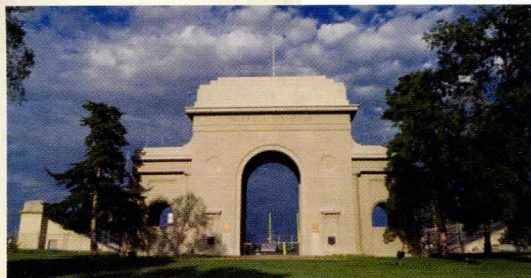


Photo Courtesy Haskell Indian Nations University

## Haskell Indian Nations University: Its History

In 1884, the federal government established the U.S. Indian Industrial Training School in Lawrence, Kan., as a means to fulfill its own policy of assimilating Native Americans and Alaska Natives into the dominant white culture. This process, unfortunately, separated children from parents, causing the deterioration of family structure and community.

In 1933, Rev. Dr. Henry Roe Cloud, Ho-Chunk Indian of the Winnebago Tribe, Nebraska, and the first Native American to graduate from Yale University, came to Haskell as its first Native superintendent and reversed the assimilation-style emphasis for a curriculum supporting Native culture instead. As students graduated from Haskell, many of them stayed on as faculty

and staff, further improving curriculum and campus life.

Today, Haskell Indian Nations University is recognized by Native Americans as the place to send their children for college. The school has, in fact, become a frontrunner in the training of Native leaders to serve in secular jobs in their own communities. Some of the brightest and best of the Native community attend Haskell, which affords our ministry a unique opportunity to recruit from a talented pool of young men and women for Christian service.

Our ministry can play a vital part in what God is already doing with Native Americans. In this new era of self-determination and pride in their heritage, Lutheran Indian Ministries and its campus ministry is situated at a time and place to bring new and exciting education opportunities to select Native students attending Haskell Indian Nations University. »»



# Memorials & Honorariums

## IN MEMORY OF:

A Friend...Magdalene Wangerin  
 ALM, Leonard & Gladys...Ginny Miller  
 ANDERSEN, Robert...Johanna J. Andersen  
 ANDERSON, Arthur M....Joyce M. Anderson  
 AYRES, Jack...Dolores A. Ayres  
 BAUMBACH, Wanda...Walt E. Baumbach  
 BERNINGHAUS, Pastor Gilbert...Ray Zimmel  
 BESKOW, Young...Lauren A. Beskow  
 BOETTCHER, Audrey...Mark Thorpe  
 BOURNE, Lloyd...Lee Insko  
 BROCKMANN, Patsy...James E. Brockmann  
 BURHENN, Marilyn...Donald Roquet  
 COHRS, Herbert W....Judith E. Cohrs  
 CONSTIEN, Nancy...R. H. Constien  
 CRAWFORD, Janet...Nina Hesby  
 CROUSE, Linda Sue...James R. Crouse  
 DITTLUFF, Roland...Marvin Reitz  
 DUVAL, Mrs. Liz...Ginny Miller  
 ERICKSON, Wallace...Gary Jerger  
 Family & Friends who have passed away recently...  
 Doris Reda  
 FERGUSON, Robert...Ellen J. Ferguson  
 FISK, Lois A...A. C. Fisk  
 FREEMAN, Judy...Kurt D. Freeman  
 FREITAG, Lucille...Lawrence F. Freitag  
 FREUDENBURG, Rev. Gerald...  
 Gerald P. Freudenberg  
 FUCHS, Arthur...Layton Lemke  
 GEYER, LaVerne...Richard Z. Atkinson  
 GOODWIN, Henry...Vera M. Goodwin  
 GORDON, Angelina...Marilyn J. Fisher  
 GRIFFIN, Agnes...Nina Hesby  
 GRITZMAKER, R.C. & Lorene...Layton Lemke  
 GROSS, Gustav...Marlys E. Gross  
 GUPTON, Bill R....Vicki J. Gupton  
 HARTWIG, Bess...Arthur Johnson  
 HASELOFF, Barbara...Joe E. Andrews  
 HASS, Ruth Rose...Leroy Hass  
 HAUBENSTRICKER, Vera...Barbara J. Houghtaling  
 HAUBENSTRICKER, Vera...Bernie Keinath  
 HAUBENSTRICKER, Vera...Bill Ackerman  
 HAUBENSTRICKER, Vera...Bob Rogner  
 HAUBENSTRICKER, Vera...Bob Smith  
 HAUBENSTRICKER, Vera...Brian Schuler  
 HAUBENSTRICKER, Vera...Carl R. Schneirfa  
 HAUBENSTRICKER, Vera...Charles A. Rees  
 HAUBENSTRICKER, Vera...Christine Laux  
 HAUBENSTRICKER, Vera...Covenant HealthCare  
 HAUBENSTRICKER, Vera...Dale Janson  
 HAUBENSTRICKER, Vera...Dale VanFleet  
 HAUBENSTRICKER, Vera...David P. Callahan  
 HAUBENSTRICKER, Vera...Donald C. Bruns  
 HAUBENSTRICKER, Vera...Donald Zehnder  
 HAUBENSTRICKER, Vera...Dorothy K. Bierlein  
 HAUBENSTRICKER, Vera...Elva A. Kehrberg  
 HAUBENSTRICKER, Vera...Eugene A. Block  
 HAUBENSTRICKER, Vera...Eugene Witt  
 HAUBENSTRICKER, Vera...Frances A. Greis  
 HAUBENSTRICKER, Vera...Gary A. Zehnder  
 HAUBENSTRICKER, Vera...Gary Bierlein  
 HAUBENSTRICKER, Vera...Gary C. Rupprecht  
 HAUBENSTRICKER, Vera...J. L. Frank  
 HAUBENSTRICKER, Vera...James E. Weber  
 HAUBENSTRICKER, Vera...James R. Remender  
 HAUBENSTRICKER, Vera...Jeffery L. Wendt  
 HAUBENSTRICKER, Vera...Jim Meyerhuber  
 HAUBENSTRICKER, Vera...John F. Bessancon  
 HAUBENSTRICKER, Vera...John Lemke  
 HAUBENSTRICKER, Vera...John P. Bierlein

HAUBENSTRICKER, Vera...Kate Kern  
 HAUBENSTRICKER, Vera...Keith Haubenstricker  
 HAUBENSTRICKER, Vera...Kenneth Kern  
 HAUBENSTRICKER, Vera...  
 Kenneth R. Haubenstricker  
 HAUBENSTRICKER, Vera...Larry C. Huber  
 HAUBENSTRICKER, Vera...Lois Hoadley  
 HAUBENSTRICKER, Vera...Lynn D. Stamiris  
 HAUBENSTRICKER, Vera...Mel Braetigam  
 HAUBENSTRICKER, Vera...Michael J. Block  
 HAUBENSTRICKER, Vera...Norb Keinath  
 HAUBENSTRICKER, Vera...Paul Kuck  
 HAUBENSTRICKER, Vera...Paul List  
 HAUBENSTRICKER, Vera...Robert A. Kraft  
 HAUBENSTRICKER, Vera...Robert Avery  
 HAUBENSTRICKER, Vera...Ron Frank  
 HAUBENSTRICKER, Vera...Ronald Rezman  
 HAUBENSTRICKER, Vera...Sandy Lubeski  
 HAUBENSTRICKER, Vera...Scott W. Helzner  
 HAUBENSTRICKER, Vera...Shirley Haubenstricker  
 HAUBENSTRICKER, Vera...Terry Collier  
 HAUBENSTRICKER, Vera...The Muehlfeld Family  
 HAUBENSTRICKER, Vera...Thomas D. Zuellig  
 HAUBENSTRICKER, Vera...Tim Haubenstricker  
 HAUBENSTRICKER, Vera...Wallace H. Laux  
 HAUBENSTRICKER, Vera...Wayne M. Nueschterlein  
 HAUBENSTRICKER, Vera...Wayne Reinbold  
 HENKE, Nicole...Merle E. Henke  
 HODIK, Grace...Janette D. Brackett  
 KALTHOFF, Elsie Osborn...James W. Kalthoff  
 KALTWASSER, Gilbert...Elizabeth Kaltwasser  
 KASPER, Ruth...Elvera Marquart  
 KASWORM, Fred...Trinity Lutheran Church  
 KIRCHHOFF, Lovele Kirchoff  
 KIRST, Barbara...Marilyn J. Fisher  
 KNUTSON, Helen...Steve Knutson  
 KOERITZ, Lila Mae...Nina Hesby  
 KOPPLIN, Sharon...Lajeanne Hettrick  
 KRAFT, Jim...Jonathan Anderson  
 KRAMER, Allan...Korinne E. Kramer  
 KREBS, Rev. George...Kathy C. Davig  
 KRETZMANN, Rev. Otto...William Morrison  
 KRUPKE, Ethel...Elvera Marquart  
 LAFAYE, Richard...Adam LaFave  
 LARSON, Arlene...Darlene Rheingans  
 LEDA, C.J....Thomas C. Schoff  
 LEE, Louisiana Revels...Wanda Lee  
 LEMKE, Arthur & Florence...Layton Lemke  
 LETSCHER, Ann...Raymond P. Letscher  
 LIEDERBACH, Tom...Darwin E. Johnson  
 LISTVAN, Adolph...Florence G. Listvan  
 LIVINGSTON, Lewis & Ida...Daniel A. Streufert  
 LODATO, William J....Lois M. Volpe  
 LOWEN, Duane...Gary Jerger  
 LOYD, John...Eleanor L. Loyd  
 McDONALD, Jack T....Helen I. McDonald  
 MCGUINNESS, Jack...Barbara S. McGuinness  
 MCKINLEY, Donald T...Ruth N. McKinley  
 MCLEOD, Elton "Sonny"...Phyllis McLeod  
 MCNEILUS, Laura...Barbara E. Pingel  
 METCALF, Sylvia...Donald K. Troxel  
 MILLER, Mr. & Mrs. Harold...Ginny Miller  
 MILLER, Pastor David H...Ginny Miller  
 MISSALL, Clarice "Granny Goose"...Gene R. Lundt  
 MISTEREK, Rev. Wallace F...Arthur G. Wahlers  
 MISTEREK, Rev. Wallace F...Wilbur Gehrke  
 MONTGOMERY, Tom...Harry C. Henneman  
 MUELLER, Harvey...Barbara Mueller  
 MUELLER, Lyn...Paul C. Mueller  
 My Grandmother Poole...Donald J. Poole  
 My Mother...Robert L. True

My Parents...Millie Stauffer  
 My Parents...Oscar F. Heyman  
 NARR, Rev. Edwin...Donald E. Urbach  
 NELSON, LaVine...Gary Jerger  
 NIEBUHR, Eric...Layton Lemke  
 NUTZMAN, Marvin James Walter...Carl Nutzman  
 NYBERG, Lawrence...Barbara E. Pingel  
 OETTING, Peg...Eugene M. Oetting  
 OHM, Verma...Harvey W. Ohm  
 OLSON, Richard A...Robert L. Olson  
 OLSON, Theodore Jr...Barbara E. Pingel  
 ORTSTADT, Jana L...Margaret J. Ortstadt  
 Our departed parents...Dale A. Busse  
 Our Parents...Donald Kruschke  
 PACHETTI, Peter...Barbara E. Pingel  
 POWELL, Amy Marie...Albert Powell  
 PROVOST, Walter D...Hildegard Provost  
 RATHMANN, Donald...Margaret M. Rathmann  
 RECK, Emma...Priscilla R. Etzel  
 RENGSDORF, Dick...Nina Hesby  
 ROBINSON, Ruth...Betty J. Moll  
 SCHIEFFER, Gretchen, my Mother...Carl L. Schiefer  
 SCHLOTZHAUER, Brenda...Ronald E. Gilson  
 SCHOEWE, Donna...Danny E. Good  
 SCHOEWE, Donna...Dorcas E. Schoewe  
 SCHOEWE, Donna...Evelyn Luinstra  
 SCHOEWE, Donna...Frances Edstrom  
 SCHOEWE, Donna...Jay R. Paperfuss  
 SCHOEWE, Donna...Margaret L. Bucklin  
 SCHOEWE, Donna...Margaret L. McCauley  
 SCHOEWE, Donna...Mary E. Pendleton  
 SCHOEWE, Donna...Maynard W. Dorow  
 SCHOEWE, Donna...Mildred B. Hardy  
 SCHOEWE, Donna...Nancy R. English  
 SCHOEWE, Donna...Neil Claus  
 SCHOEWE, Donna...Nicholas D. Schoewe  
 SCHOEWE, Donna...Pamela Wolfmeyer  
 SCHOEWE, Donna...Ruth P. Mohn  
 SCHOEWE, Donna...Strand Wedul  
 SCHOEWE, Donna...Theodore M. Schoewe  
 SCHOON, Gary...Jonathan Anderson  
 SCHORN, Frank...Nancy R. Garbowski  
 SCHUMACHER, Alma...Lillian E. Gierke  
 SELL, Cathy...Charles A. Sell  
 STREUFERT, Albert & Edna...Daniel A. Streufert  
 STROMSWALD, Orrin...Elvera Marquart  
 STUEBER, Marjorie...Barbara E. Pingel  
 SYMM, Betty...Carl Symm  
 SYMM, Marvin Lee...Carl Symm  
 THOMPSON, Robert Glenn...  
 Charles & Judy Mitchell Charitable Fund  
 TORMOHLIN, Florence...Janie Tormohlen  
 TORREZ, Stephen...Eileen Newkirk  
 UFFELMAN, Lester...Norma Jean Uffelmann  
 VOLZKE, Marvin...David Van Patten  
 VON DIELINGEN, Arnold & Theilma...  
 Raymond R. Spicer  
 VON HOLLEN, Verma...Eleanor C. Nail  
 WALKER, Jane...Jeffrey Smith  
 WALKER, Jane...Jere Soehngen  
 WALKER, Jane...Michael Walker  
 WALKER, Jane...Ann Budke  
 WALKER, Jane...Authur A. Koors  
 WALKER, Jane...Carol J. Lovins  
 WALKER, Jane...Catherine L. Wilson  
 WALKER, Jane...Ellen O. Mulford  
 WALKER, Jane...Eugene Kunz  
 WALKER, Jane...George Walker  
 WALKER, Jane...James W. Budke  
 WALKER, Jane...Joel P. Budke  
 WALKER, Jane...John L. Miller

WALKER, Jane...John W. Bradshaw  
 WALKER, Jane...Kenneth W. Knigga  
 WALKER, Jane...Louis Sellers  
 WALKER, Jane...Martha A. Dilk  
 WALKER, Jane...Martha J. Jarvis  
 WALKER, Jane...Mary Hochmuth  
 WALKER, Jane...Michael Crawley  
 WALKER, Jane...National Library Bindery  
 Company of Indiana, Inc.  
 WALKER, Jane...Rebecca A. Budke  
 WALKER, Jane...Scott R. Osborn  
 WALKER, Jane...Thomas Lovins  
 WARNS, Jack...Jean B. Schultz  
 WAUGHTAL, Judith...Maynard Klein  
 WESTBERG, Karl...Lorraine I. Taylor  
 YOUNCE, Pastor Loring...Ronald C. Carpenter  
 ZELLMANN, Marilyn...Layton Lemke  
 ZIEGELBEIN, William...Kenneth Ziegelbein

## IN HONOR OF:

All the Wounded Warriors...Alvin R. Fugett  
 All who minister...Deborah K. Scheffey  
 ALMEN, Ruth...Anthony Almen  
 BAILEY, Marty...Wayne Dunlap  
 BERTNSON, Rev. Stan & Sharon...  
 Cecelia H. Coenen  
 BOTCHER, Dorothy...Ronald E. Severson  
 BOVA, Tony C...Robert L. True  
 Brenna...Harris Heinemann  
 CAMPBELL, Mr. and Mrs. Colin, Merry Christmas...  
 Carol Corley  
 CAMPBELL, Mr. and Mrs. Ken, Merry Christmas...  
 Carol Corley  
 CONSTIEN, Pastor Stephen...Alfred O. Dingler  
 CORDELL, Yvonne...Faith Lutheran Ladies Guild  
 GINTER, Guy & Rebecca...Joylyne B. Dickerson  
 HALDRONSON, Alice...Esther Pfeifer  
 HANSCOM, Calvin...Maurice R. Gordon  
 HANSON, Bob & Genie, 50 years of marriage...  
 Tim L. Bauer  
 HEINZL, Judy...R. D. Webb  
 HERINGS, Tootie, in honor of such happy memories...  
 Lois E. Allbeck  
 Christ...Jerry L. Kinsner  
 JACOB, Rev. Ricky & family at Winnebago...  
 Donald P. Nash  
 JAMES, Frank (Lakota Sioux)...Gary R. Olson  
 JIRTLE, Dorothy...Tom G. Hepler  
 L'YNGSTAD, Robert & Karla...Lorenz Boettcher  
 MAIN, Rev. Will & Patricia...Faye Ann Kimball  
 MARRIAGE of Judy & Richard...George M. Locke  
 MUSCHINSKE, Rev. and Mrs. George...  
 Gerald C. Schield  
 Our Mother's Birthday...Paul E. Grunow  
 PANNING, John & Helen...Richard R. Stoudt  
 PESKE, Rev. Mark, Thanks for your ministry...  
 Michael F. Nelson  
 RETTMER, Forrest & Georgia...Gerald D. Murray  
 ROONEY, Mr. and Mrs. Kyle, Merry Christmas...  
 Carol Corley  
 SIEDSCHLAG, John's 75th Birthday...  
 Victor D. Tegtmeier  
 SIGNOR, Caroline's Birthday...Sharon L. Struve  
 The Ed Conklin Family...Orville Harshbarger  
 The Gerald Garlies Family...Orville Harshbarger  
 WALTERS, Bob & Jean...Karl Walters  
 WORSHAM, Bob...JoAnn Worsham

## A Gift Today ... A Legacy Tomorrow

We are blessed to have received a very special commitment toward the construction of our new Haskell LIGHT Campus Ministry center.

Although the donor wishes to remain anonymous, this couple wants to share their thoughts on this momentous undertaking. It is their hope to encourage you and other friends of Lutheran Indian Ministries to support this project in various ways.

*"Our very reason for existence is to share the Gospel. We love the fact that this ministry center will afford the opportunity for more Native young people to further the Gospel in their communities."*

For that reason, our donor feels that their commitment *"is a means to share Jesus."*

### The time is now.

This gift and all gifts to this significant venture will change lives for many years to come.

A special legacy, indeed!

## Laborers For Christ

Lutheran Indian Ministries is pleased to partner with Laborers For Christ (LFC) as we begin construction on the new Haskell LIGHT facility.

Members of LFC bring experience and expert knowledge in construction, typically cutting the project management costs 10 percent to 30 percent.

We plan to also involve student volunteers from Haskell Indian Nations University and others during the two phases of construction and design of the interior spaces.

Laborers For Christ help put Ministry in Motion by serving as the hands and hearts to accomplish God's plan for ministry and the goal of reaching more people. They assist with remodeling projects, building a brand-new facility or updating an organization's physical structure for optimal efficiency.

For more information on volunteering, contact Lutheran Indian Ministries at 888-783-5267.

Visit [lcef.org/facilities\\_planning/](http://lcef.org/facilities_planning/) for more information on Laborers For Christ. ➤





## Lutheran Indian Ministries

*Christ's Kingdom—Every Native American Nation.*

A Ministry of Lutheran Association of Missionaries and Pilots U.S.

3525 North 124th Street, Suite 1

Brookfield, WI 53005-2498

[LutheranIndianMinistries.org](http://LutheranIndianMinistries.org)



Patricia Main's Vision Quest Class at Haskell Indian Nations University, Lawrence, Kansas



## Lutheran Indian Ministries


*Christ's Kingdom—Every Native American Nation.*

A Ministry of Lutheran Association of Missionaries and Pilots U.S.

### Connect With Us Online

To keep current with Haskell LIGHT Campus Ministry's building campaign, visit us online!

[LutheranIndianMinistries.org](http://LutheranIndianMinistries.org)

 [Facebook.com/IndianMinistry](https://www.facebook.com/IndianMinistry)

 [Twitter.com/IndianMinistry](https://twitter.com/IndianMinistry)

### Contact Us By Mail or Phone

Lutheran Indian Ministries  
3525 North 124th Street, Suite 1  
Brookfield, WI 53005-2498  
Phone: 888-783-5267